



Amoul AED Defibrillator

Product Introduction

Product & Research Department
TERRA ENERGY SDN BHD
January 2022

2022



Introducing **Amoul AED i3 & AED i5.**

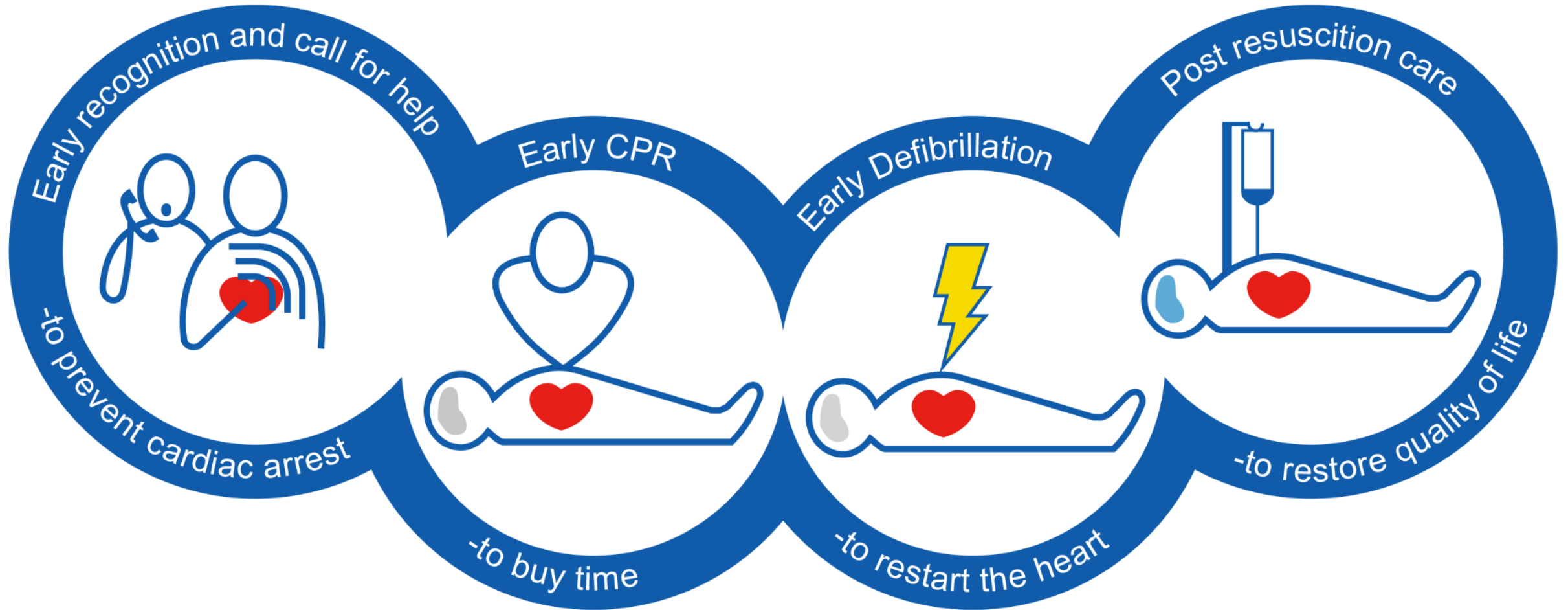
Compliance with ERC/AHA guidelines and MDA





Why?

Amoul AED i3 & i5



Automated External Defibrillator i3

can save life when a heart arrest happens



At a Glance



**Real-time
battery status**



**Voice and visual
instructions guide
the rescuer
through the entire
defibrillation
process**



**Smart Biphasic
Truncated
Exponential
shock waveform**



**Remotely
management**



**Portable size &
Lightweight
(2.3kg)**

Automated External Defibrillator i3

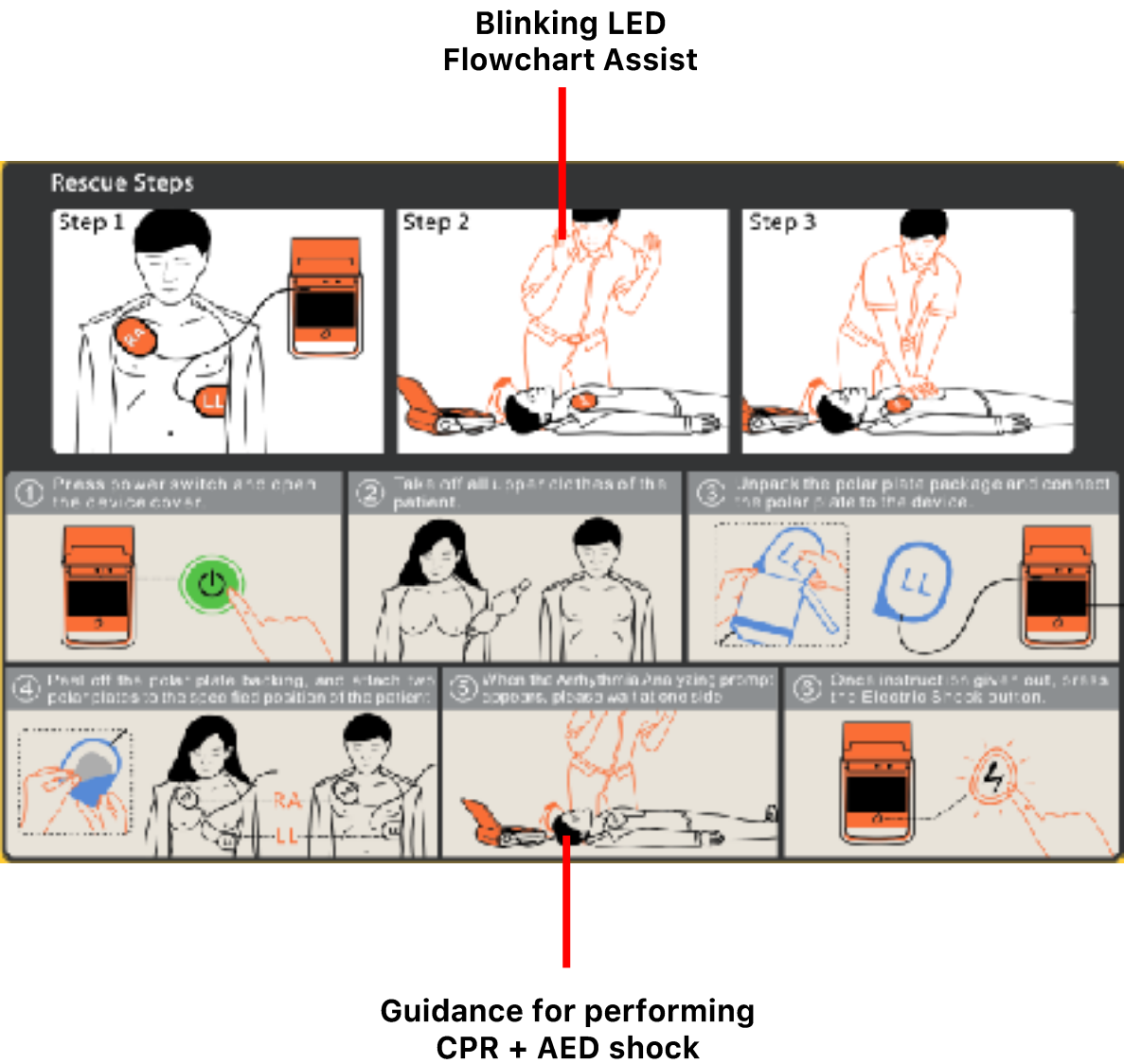
save life on a single tap

Features:

- Biphasic Truncated Exponential (BTE) Shock Waveform
- High capacity and long-life lithium manganese dioxide battery, minimum 200 shocks, 5 years valid
- Visualized status of battery and system
- Detailed voice instructions and illustrations makes rescue easier
- Automated tracking and direct data transfer via built-in 4G module (optional) Data storage of 24hrs ECG and up to 1000 events
- Deliver a 200J shock to adults and 50J shock to pediatric
- Daily self-tests, report device status in time, ideal for remote management.



Features



How to use?

Amoul AED i3



1



Turn on AED

2



Place the pads
on the patient as
directed

3



Follow the voice
instructions and
press the shock
button



**Automated External
Defibrillator i5**
can save life when a heart arrest happens

At a Glance



**Real-time
battery status**



**Voice and visual
instructions guide
the rescuer
through the entire
defibrillation
process**



**Smart Biphasic
Truncated
Exponential
shock waveform**



**Remotely
management**



**Portable size &
Lightweight
(2.3kg)**



**7 inch HD
screen (i5
only)**

Automated External Defibrillator i5

save life on a single tap

Features:

- 7" HD display
- Biphasic Truncated Exponential (BTE) Shock Waveform
- High capacity and long-life lithium manganese dioxide battery, minimum 200 shocks, 5 years valid
- Visualized status of battery and system
- Detailed voice instructions and illustrations makes rescue easier
- Automated tracking and direct data transfer via built-in 4G module (optional) Data storage of 24hrs ECG and up to 1000 events
- Deliver a 200J shock to adults and 50J shock to pediatric
- Daily self-tests, report device status in time, ideal for remote management.



How to use?

Amoul AED i5



1



Turn on AED

2



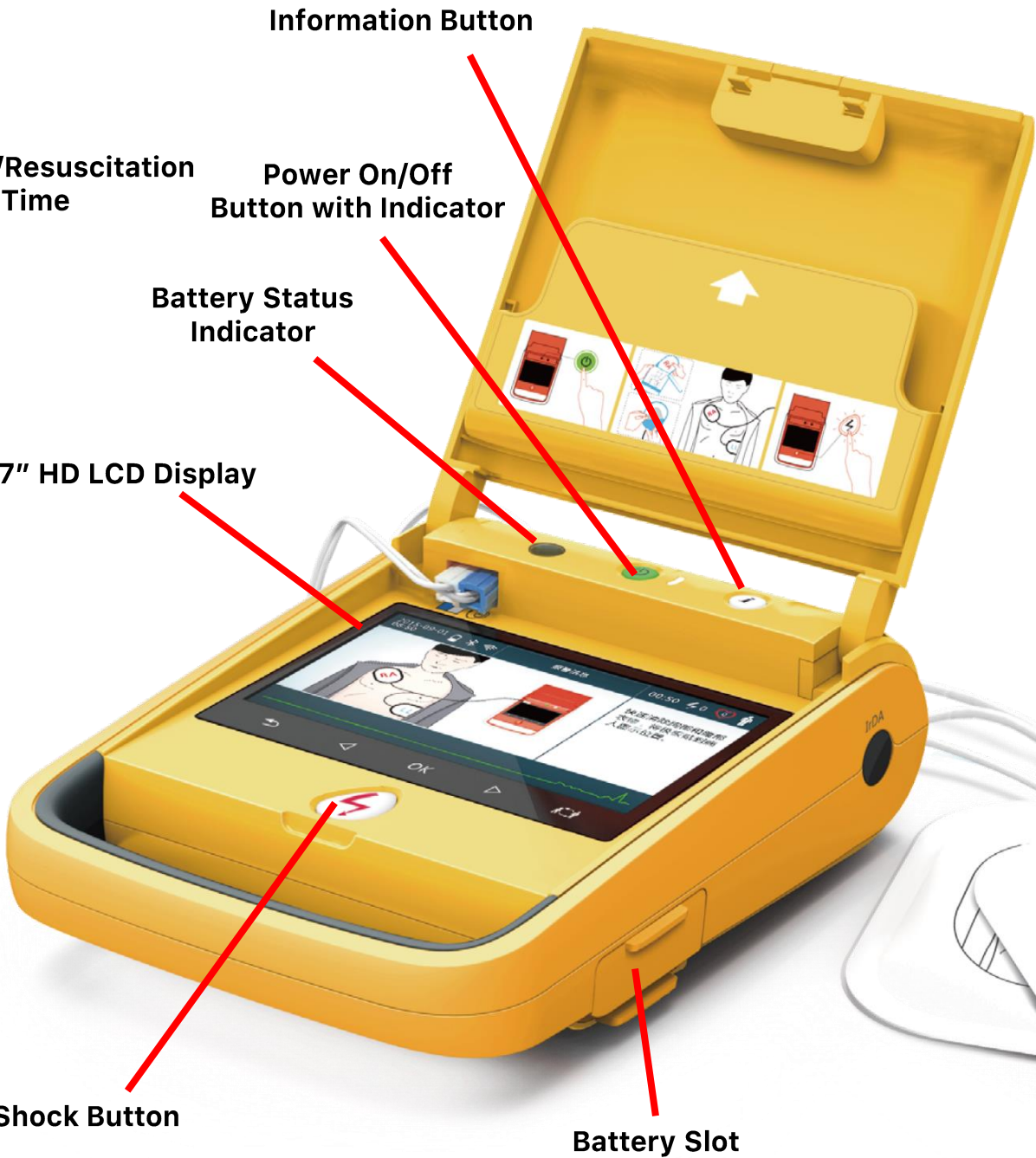
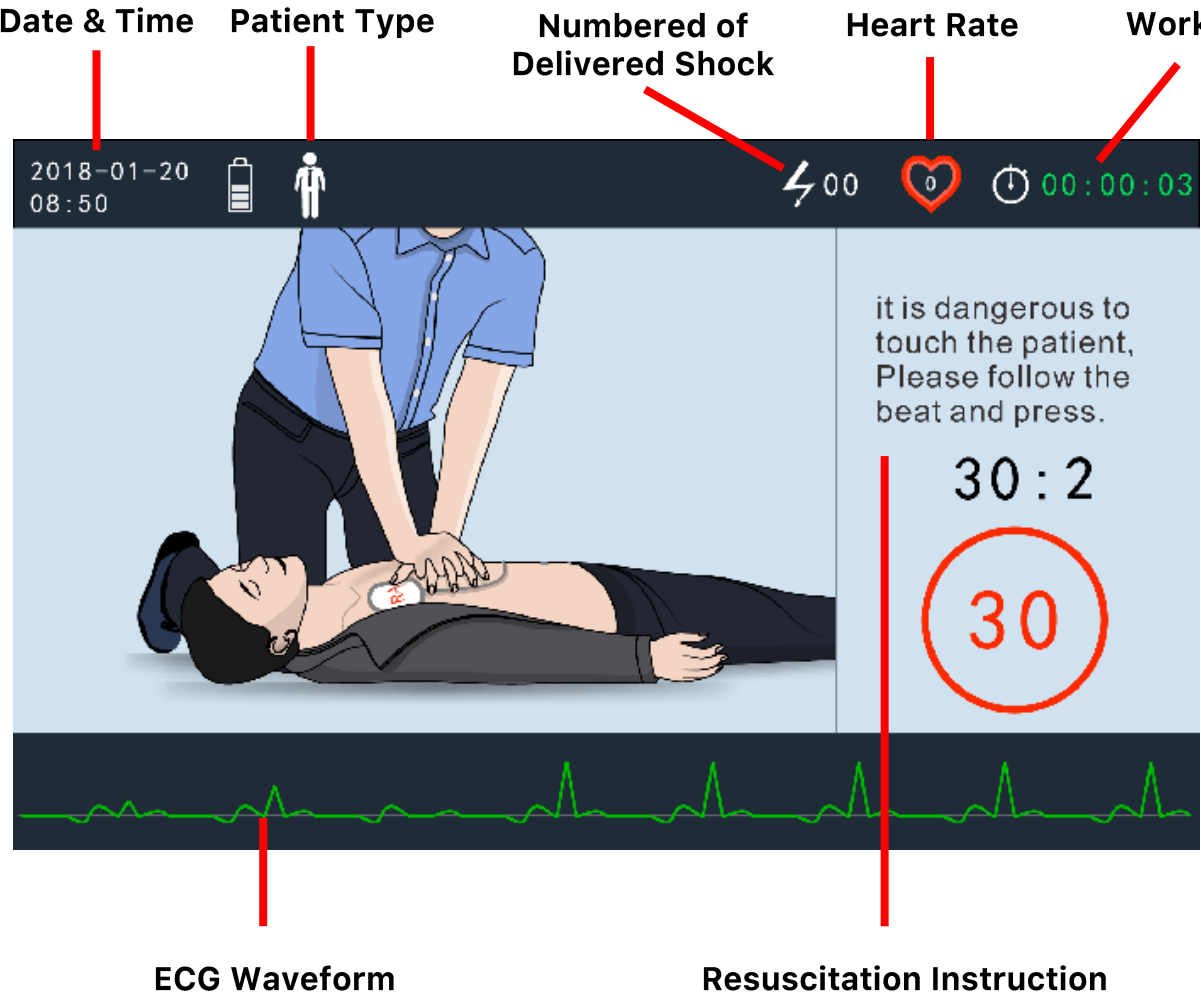
Place the pads
on the patient as
directed

3



Follow the voice
instructions and
press the shock
button

Features



Model Comparison

AED i3

No display

Blinking light
instructions



AED i5

7 inch

HD display



Biphasic Truncated Exponential (BTE)

Shock waveform

200J shocks (Adults) 50J shocks (Paediatric)

Shocks deliver

Battery Life up to 5 Years (min. 200 shock)

High Capacity and long-life lithium manganese dioxide battery

Voice & Illustration Assistant

Makes the rescue easier in a single tap

Battery

Visualized status battery & system

Self Test

Daily self test, report device status in time, ideal for remote management

24 Hours ECG and 1000 events

Data storage of 24hrs ECG and up to 1000 events

Remote Monitoring Management

Automated tracking and direct data transfer via built-in 4G module (optional)

Accessories



Non-Rechargeable AED Battery

- a) High capacity and long-life lithium manganese dioxide battery (Maximum 5 years of operation)
- b) Up to 200 Shocks
- c) Non – Rechargeable battery (Single use battery)
- d) Shelf life – 7 years



Rechargeable AED Battery

- a) Lithium-ion battery (Maximum 1/2 years of operation)
- b) Up to 200 Shocks
- c) Rechargeable battery (Reusable battery) comes with DC charger
- d) Charging time – 5 hours
- e) Shelf life – 5 years

Accessories



Adult Electrode Pad (Disposable)

- a) 1 set adult pad with 2 years shelf-life (minimum) and up to 4 years (Based on expiry date of the package)
- b) Single use only



Child Electrode Pad (Disposable)

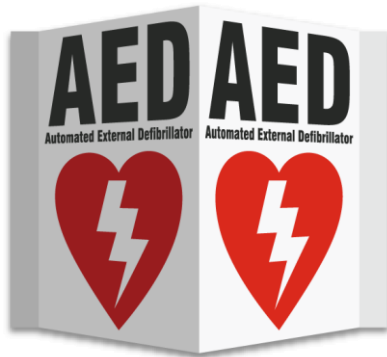
- a) 1 set child pad with 2 years shelf-life (minimum) and up to 4 years (Based on expiry date of the package)
- b) Single use only

Accessories



Carrying Bag

- a) Sleek carrying case for the main unit and electro pad
- b) Sling bag type



AED Two Point Signage

- a) Size: 290mm(L) x 345mm(H) x 170mm(D)

Accessories



Wall Mounted Steel Cabinet

- a) Size: 290mm(L) x 345mm (H) x 170mm(D)
- b) 1 key installed inside the box + extra 1 key
- c) Built in with siren and strobe for door sensor



Vertical Steel Cabinet

- a) Size: 350mm(L) x 1450mm (H) x 150mm(D)
- b) Weight: 22 Kg
- c) 1 key installed inside the box + extra 1 key
- d) Built in with siren and strobe for door sensor
- e) 2 tiers cabinet for storage of other equipment's

Authorized Distributor



OR/ICU & Respiratory Solution



OR/ICU & Respiratory Solution



Patient Monitoring Solution



Infusion Device Solution



CPR Device Solution



Airway Management Ecosystem Solution



Emergency Solution



Medical Imaging Solution



MDA-1466-WDP120



TERRA ENERGY SDN BHD

Unit B-7-9, Megan Avenue 2,
12, Jalan Yap Kwan Seng,
50450 Kuala Lumpur

Tel: +603-2163 3366

Tel: +6013-223 5449

Email: sales@terraenergy.com.my